



## Hard Chess Puzzle # 0122

By

G Bud Games  
<https://gbud.in>

January 30, 2022

## Contents

<b>Hard Chess puzzle # 0122 - Mate in 3 moves</b>	<b>3</b>
Hard chess puzzle 0122 . . . . .	3
Solution to hard chess puzzle 0122 . . . . .	4
Solution 1 . . . . .	4
Right moves for the solution to the hard chess puzzle 0122	7
Explanation for the moves . . . . .	7
Categories of hard chess puzzle 0122 . . . . .	8
hard chess puzzle 0122 chart . . . . .	8
How to view the solution to hard chess puzzle 0122 . . . . .	10
How to get help for moves in the hard chess puzzle 0122 . . . . .	11
Play chess for free . . . . .	12

## List of Figures

1	<a href="https://gbud.in/g1hk4c3">Solve this hard chess puzzle 0122. Mate in 3 moves @ https://gbud.in/g1hk4c3</a> . . . . .	3
2	<a href="https://gbud.in/g1hk4c3">Solve this hard chess puzzle online with solution @ https://gbud.in/g1hk4c3</a> . . . . .	3
3	Initial board position of hard chess puzzle 0122 . . . . .	4
4	Rxb1+ . . . . .	5
5	Kxb1 . . . . .	5
6	Rf1+ . . . . .	6
7	Qe1 . . . . .	6
8	Rxe1# . . . . .	7
9	hard chess puzzle 122 chart 1 . . . . .	8
10	hard chess puzzle 122 chart 2 . . . . .	9
11	hard chess puzzle 122 chart 3 . . . . .	9
12	hard chess puzzle 122 chart 4 . . . . .	10
13	<a href="https://gbud.in/g1hk4c3">Click the solution button to view solutions @ https://gbud.in/g1hk4c3</a> . . . . .	10
14	<a href="https://gbud.in/g1hk4c3">Click the help button to get help on next move @ https://gbud.in/g1hk4c3</a> . . . . .	11
15	<a href="https://gbud.in/chshdpz">Solve more hard puzzles @ https://gbud.in/chshdpz</a> . . . . .	11
16	<a href="https://gbud.in/chsgppz">Solve other puzzles @ https://gbud.in/chsgppz</a> . . . . .	11
17	<a href="#">Play chess online for free. Solve puzzles and play with friends</a> . . . . .	12
18	<a href="#">Solve this puzzle online by scanning this QR code or go to the link below</a> . . . . .	13

## Hard Chess puzzle # 0122 - Mate in 3 moves

Solve this hard chess puzzle and improve your chess games through improvement of your chess strategies and chess tactics. This hard puzzle is a subset of [kids games](#).

Puzzle No : 0122

Difficulty level : hard

Description : Mate in 3 moves

Next Move : Black

Player level : Advanced

Short URL for puzzle : <https://gbud.in/g1hk4c3>

### Hard chess puzzle 0122

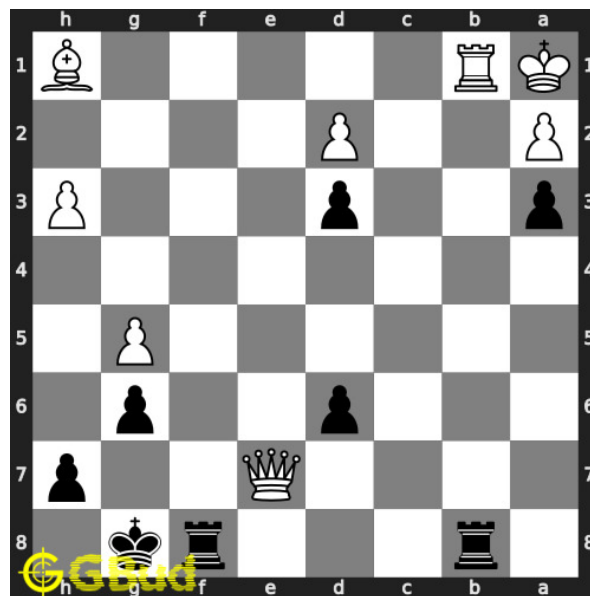


Figure 1: Solve this hard chess puzzle 0122. Mate in 3 moves @ <https://gbud.in/g1hk4c3>



Figure 2: Solve this hard chess puzzle online with solution @ <https://gbud.in/g1hk4c3>

Dont forget to check out [chess puzzles](#), [easy chess puzzles](#), [medium chess puzzles](#), [hard chess puzzles](#) and [chess puzzles collections](#) .

## Solution to hard chess puzzle 0122

At this puzzle, next [move](#) is by [Black](#). The objective of the puzzle is to mate in 3 moves.

See the interactive solution at the [puzzle page](#)

### Solution 1

**Initial board position** This is the initial board position of hard chess puzzle 0122.

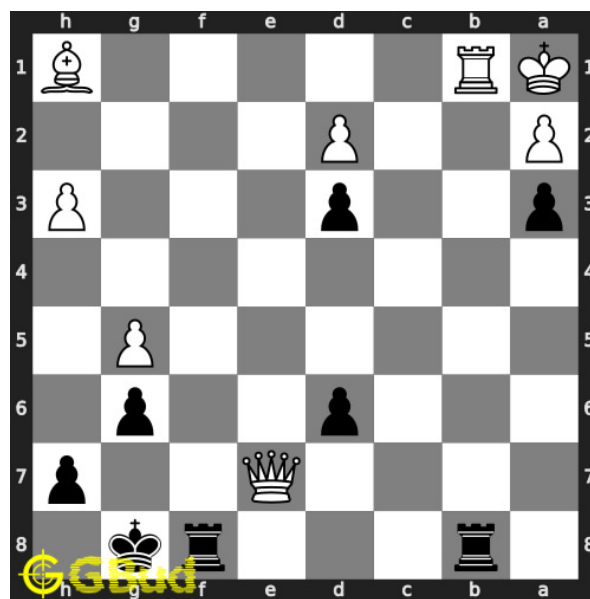


Figure 3: Initial board position of hard chess puzzle 0122

**Move 1** Move by black

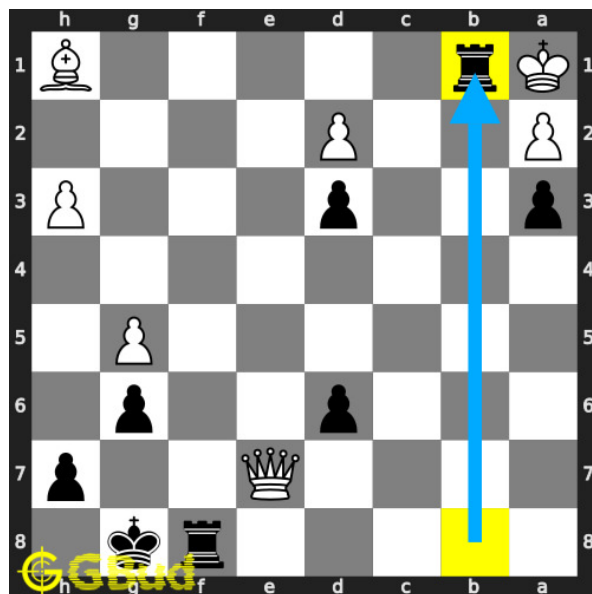


Figure 4: Rxb1+

your [rook sacrifices](#) itself to open the first [rank](#).

**Move 2** Move by white

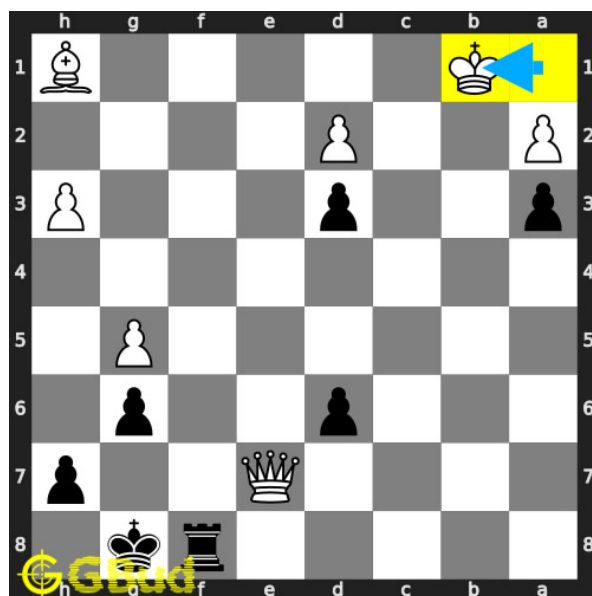


Figure 5: Kxb1

this is a zugzwang [move](#) as the opponent's [king](#) is forced to respond. opponent's [king captures](#) your [rook](#).

**Move 3** Move by black

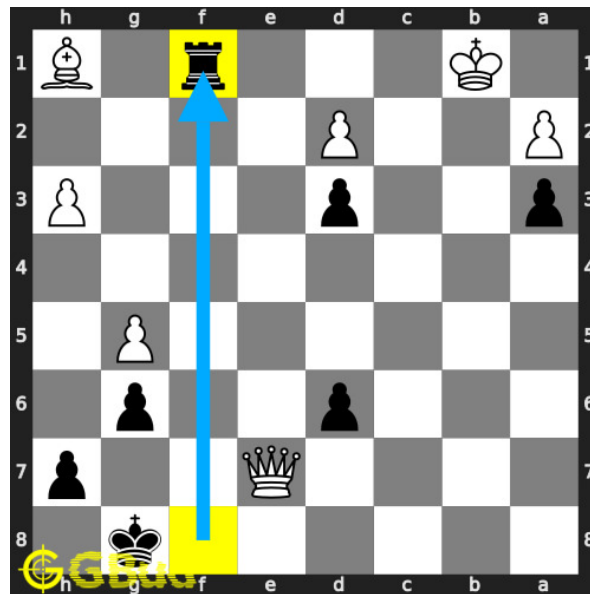


Figure 6: Rf1+

your **rook** moves to **f1** and gives **check** to opponent.

**Move 4** Move by white

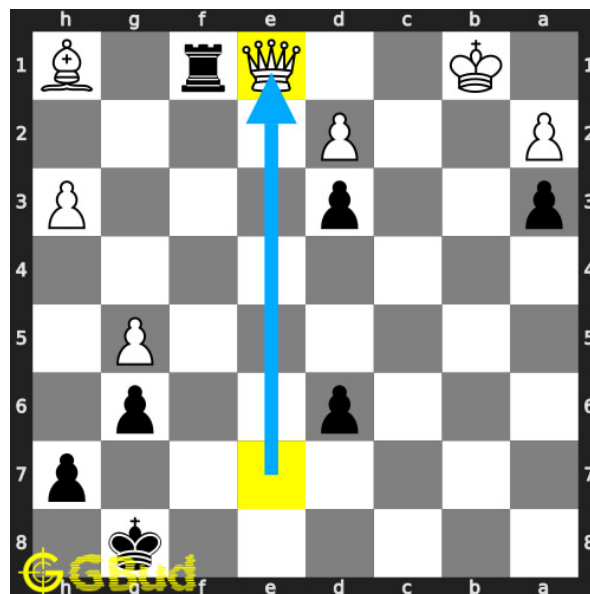


Figure 7: Qe1

opponent's **queen** blocks the **check** as this is the only legal **move** available.

**Move 5** Move by black

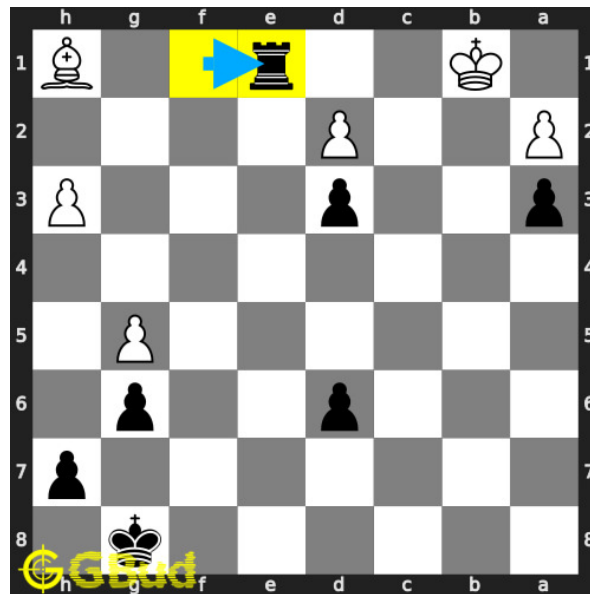


Figure 8: Rxe1#

your **rook captures** opponent's **queen** and **checkmate**. the **king** can't **move** due to the additional attack from your **pawns**. this is how you can **mate** in 3 **moves**.

### Right moves for the solution to the hard chess puzzle 0122

Based on the objective of the puzzle, you have to make the right moves. Following are the right moves

1. Rxb1+, Rf1+, Rxe1#

### Explanation for the moves

1. Rxb1+ - Your rook sacrifices itself to open the first rank.
2. Kxb1 - This is a zugzwang move as the opponent's king is forced to respond. Opponent's king captures your rook.
3. Rf1+ - Your rook moves to f1 and gives check to opponent.
4. Qe1 - Opponent's queen blocks the check as this is the only legal move available.
5. Rxe1# - Your rook captures opponent's queen and checkmate. The king can't move due to the additional attack from your pawns. This is how you can mate in 3 moves.
6. For right move - With the right sacrifice of your rook you had a mate in 3 moves. Good strategy

7. For wrong move - You could have sacrificed the rook for a checkmate.  
Try again

## Categories of hard chess puzzle 0122

This hard chess puzzle falls in these categories.

1. [Hard chess puzzles](#)
2. [Sacrifice puzzles in chess](#)
3. [Mate in 3 puzzles in chess](#)
4. [Endgame puzzles in chess](#)
5. [Strategy puzzles in chess](#)
6. [Zugzwang puzzles in chess](#)
7. [Rook puzzles in chess](#)

### hard chess puzzle 0122 chart



Figure 9: hard chess puzzle 122 chart 1





Figure 10: hard chess puzzle 122 chart 2

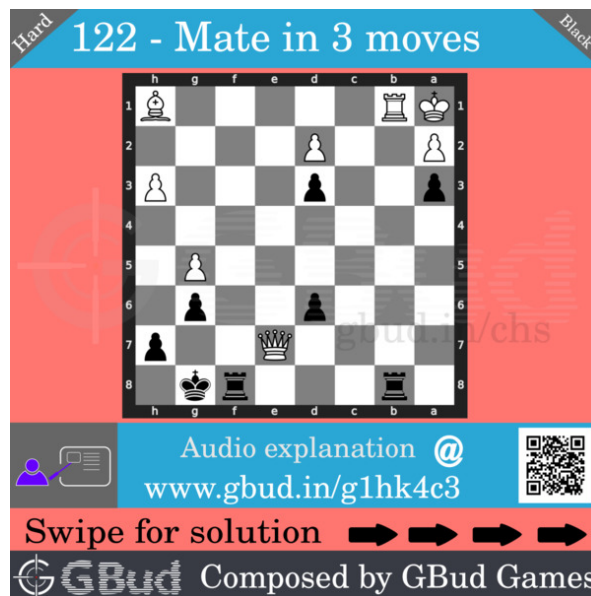


Figure 11: hard chess puzzle 122 chart 3

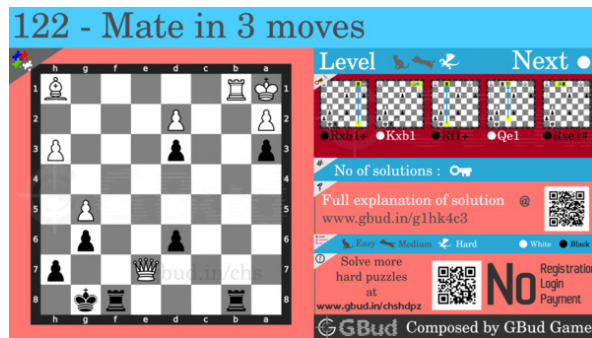


Figure 12: hard chess puzzle 122 chart 4

## How to view the solution to hard chess puzzle 0122

To view the [solution to this puzzle](#), follow the steps given below

1. Go to the [puzzle page](#)
2. Click the solution button (Key as shown [below](#)) to view the solution



Figure 13: Click the solution button to view solutions @ <https://gbud.in/g1hk4c3>

## How to get help for moves in the hard chess puzzle 0122

To get help or the possible next moves in the puzzle, , follow the steps given below

1. Go to the [puzzle page](#)
2. Click the help button (exclamation mark as shown [below](#)) to get help or suggestion on next possible [move](#)



Figure 14: Click the help button to get help on next move @ <https://gbud.in/g1hk4c3>



Figure 15: Solve more hard puzzles @ <https://gbud.in/chshdpz>



Figure 16: Solve other puzzles @ <https://gbud.in/chsgppz>

## Play chess for free

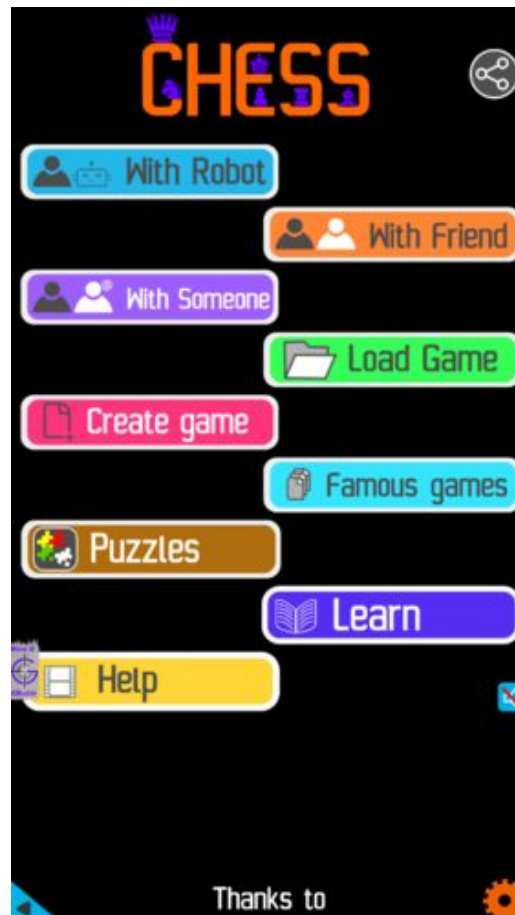


Figure 17: Play chess online for free. Solve puzzles and play with friends

Play chess for free at <https://gbud.in/chs>

We present you a platform to play chess online with friends for free. No need to install any app. You can play chess for free without registration or login.

Simple. You can do several chess related activities.

1. solve chess puzzles
2. learn about chess
3. play chess with computer
4. play chess with friend
5. create your own chess games

6. [fen viewer](#)
7. [fen editor](#)
8. [fen generator](#)
9. [pgn viewer](#)
10. [chess board editor](#)
11. [view famous chess games.](#)



Figure 18: Solve this puzzle online by scanning this QR code or go to the link below

<https://gbud.in/g1hk4c3>

Read the latest article on Hard Chess puzzle # 0122 - Mate in 3 moves by scanning this QR code or click the link

Previous article : « [Hard Chess puzzle # 0121 - Mate in 3 moves](#)

Next article : [Hard chess puzzles](#) »

[Back to top](#)

[Contact Us](#)